

SUMMARY

RCI is a database of roadway physical, administrative and conditions. RCI also contains information on rail lines and non motorized ways. RCI is one of the most influential databases used at FDOT. It is linked to and used by many departmental offices and other governmental agencies. RCI is maintained by District and Central Office personnel and it includes more than 12 million records and growing.

MORE ABOUT THE DATA:

Developer: FDOT Office of Information Technology (OIT)

First year: 1977

Recent year: 2016

Data Sponsors: Maintenance, Transportation Statistics, Traffic Operations, Rail and Systems Planning

RCI Update Frequency: Live

Shapefile Update Frequency: Weekly

Temporal Coverage: N/A

Geographical Coverage: Statewide

Geographical Resolution: Roadway

Modal Coverage: Multimodal

Data Format: CSV, Shapefiles, Oracle SQL Databases

Licensing Agreement: N/A

Acquisition Cost: Free

Legal Reference: 23 CFR 420.105 (b)

Contact:

[FDOT TRANSTAT](#)

(850)-414-4848

CURRENT APPLICATIONS

Funding apportionment, Highway Performance Monitoring System (HPMS), Demand Models, Safety Analyst tool, MOVES emission tool, Work Program Roadway Information

IMPORTANT DOCUMENTS

- » RCI Features and Characteristics Handbook
- » RCI Planning Data Handbook
- » RCI User Manual

MAJOR FEATURES IN RCI

Functional Classification, Highway Maintenance Class, Service Plazas, Parking restrictions, Rail Line Facility, AASHTO, HPMS, Federal System, State Road System, Facility Class, Stationing Exceptions, Managed Lanes, Strategic Intermodal System, AADT Type, Direction, High Occupancy Vehicle Lanes, Number of rest areas without facilities/with facilities, urban size, number of lanes in peak direction, Traffic monitoring sites, turning restrictions, railroads, crossovers, signals, mile-marker signs, intersections and interchanges

RCI USERS

In FDOT: General Counsel Office , Office of Maintenance , Outdoor Advertising Office , Public Transit Office, Right of Way Office , Safety Office , Systems Planning Office, Rail and Motor Carrier Operations Office, Traffic Engineering and Operations and Work Program.

Outside FDOT: General public, local governments, engineers, mapping companies, law enforcement agencies, the legal profession, realtors, developers, theme park operators, the media, emergency medical service providers.

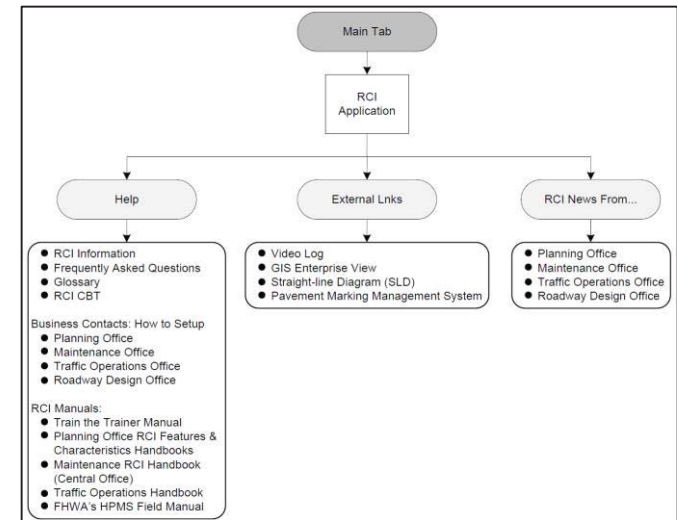


Figure: RCI Functional Classification

Complexity Measure	Spatial Coverage	Commodity Coverage	Industry Coverage	Modal Coverage	Temporal Coverage	Collection Frequency/update	Accuracy	Access	Usability
Rating	●	◐	◐	●	●	●	●	●	●

