

**SUMMARY**

The Official Airline Guide (OAG) is an air travel intelligence reference that provides data on airline schedules, cargo and aviation analytics. OAG's databases include cargo flight information updated daily, worldwide cargo schedules from freighter aircraft to road feeder services, origin/destination information, flight details, airline code, airport, and aircraft type. Furthermore, OAG offers a comprehensive reference guide for cargo flights that is updated monthly to provide visibility of all flight options available. Data can be customized to specifically contain the parameters desired by the user.

**MORE ABOUT THE DATA:**

Developer: [Official Airline Guide](#)

Update Frequency: Daily

Latest Year Available: 2015

Temporal Coverage: Up-to-the-minute

Geographical Coverage: Worldwide

Geographical Resolution: Airport

Modal Coverage: Air

Data Format: Web based, XML, Online Server with secure access, Printed

Licensing Agreement: Required

Acquisition Cost: Variable

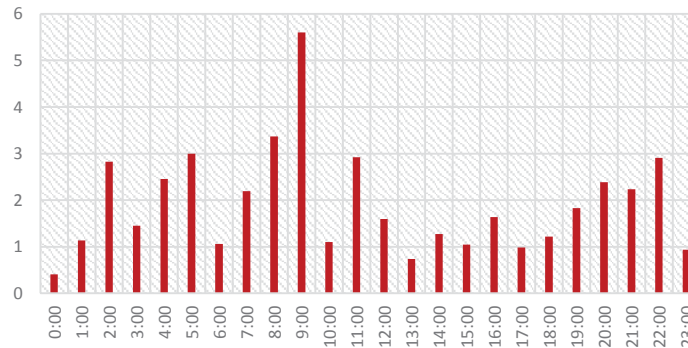
Contact:

[FDOT Transportation Statistics Office](#)  
(850) 414-4848

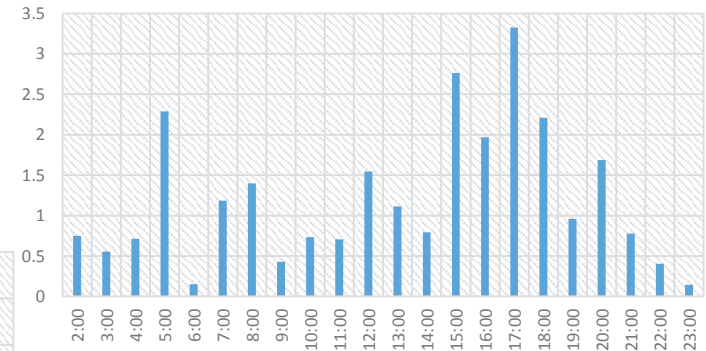
**POTENTIAL APPLICATIONS**

- » Freight Performance Measures
- » Traffic Operations/Services
- » Safety Planning and Analysis
- » Emergency Preparedness and Security Planning
- » Regulation and Enforcement
- » Terminal and Border Access Planning
- » Sustainable Transportation Investment
- » Freight Transportation and Land Use Planning

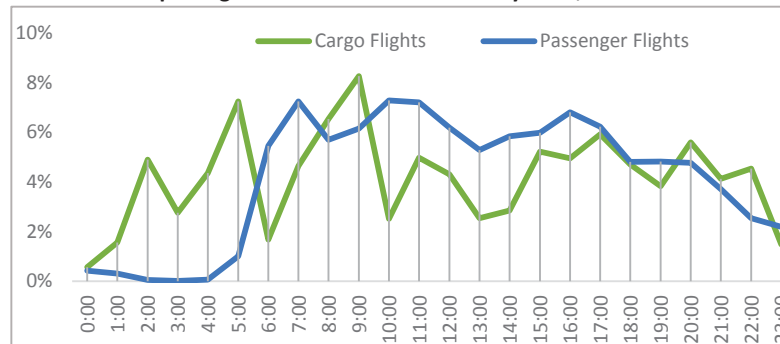
**Average Daily Cargo Flights Departed from Miami Intl. Airport by Hour, 2013\***



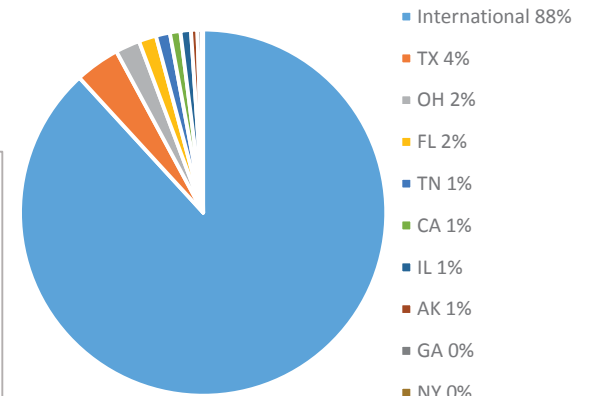
**Average Number of Daily Cargo Flights Arrived in Miami International by Hour, 2013\***



**Comparison of Average Daily Cargo and Passenger Flights Arriving and Departing from Miami International by Hour, 2013\***



**Average Daily Air Cargo Destination Market Share from Miami International, 2013\***



\* Source: FDOT Aviation Office

Complexity Measure	Spatial Coverage	Commodity Coverage	Industry Coverage	Modal Coverage	Temporal Coverage	Collection Frequency/update	Accuracy	Access	Usability
Rating	●	○	○	◐	●	●	●	◐	●

